



# HOUSE & LAND

**\$540,025\***

## EPPING VIEWS – WOLLERT

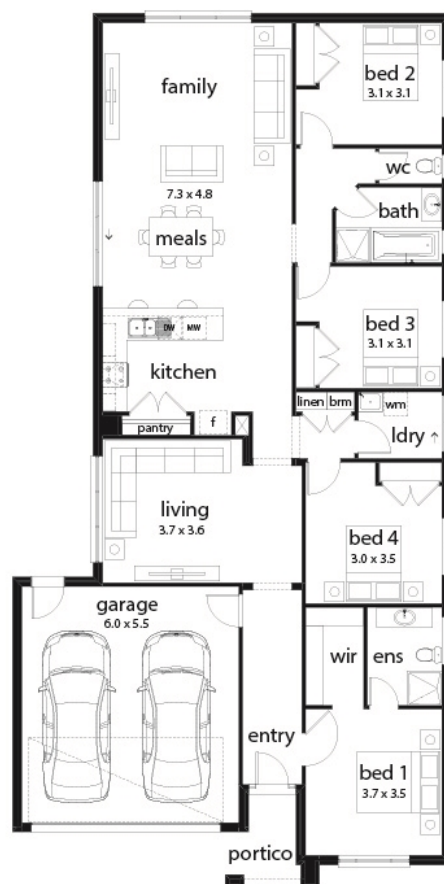
Lot 435 Sallybank Crescent  
Wollert VIC 3750

🚗 4 🏠 2 🚗 2 🚗 2

**Oxford 23 Estate Façade**  
(Aspirations)

Home size: 22.51sq Land size: 387m<sup>2</sup>

- ✓ Aspirations Inclusions
- ✓ BAL
- ✓ Fixed Site Costs
- ✓ Recycled Water
- ✓ NBN Connection
- ✓ 2580mm Ceiling Height
- ✓ Remote control to garage door
- ✓ Flyscreens
- ✓ Ducted Heating
- ✓ Current Promotion
- ✓ Carpet to remaining areas
- ✓ Concrete paving to driveway and portico (up to 35m<sup>2</sup>)
- ✓ Designer front entry door
- ✓ Lockable internal access door from garage
- ✓ European designed stainless steel appliances
- ✓ Overhead cupboards with bulkhead above
- ✓ Designer mixer tapware throughout



Go to **dennisfamily.com.au** or call  
**1800 DENNIS** for more information.

Miriam 0448 654572  
Reference HL0030933